



<b>Bayport Terminal Acreage</b>		
Bayport North Acreage		
Wharves	36.04	Acres
Container Yard	247.3	Acres
Gate Facilities	26.86	Acres
West Empty Yard	25.12	Acres
Service Buildings	21.13	Acres
Retention Ponds Not In Buffer Zone	6.27	Acres
Auto Terminal	45.65	Acres
Future Container Yard Expansion	64.18	Acres
Future East Empty Yard	25.98	Acres
Future Auto Terminal Co- Development Areas	82.13	Acres
Berth 7 Expansion Area	1.32	Acres
<b>Total</b>	<b>591.98</b>	<b>Acres</b>
Bayport South Acreage		
Buffer Zone	120.89	Acres
Intermodal Yard	72.06	Acres
Container Freight Station	59.14	Acres
Industrial Co-Development Area	107.93	Acres
Freight Station Container Yard	20	Acres
<b>Total</b>	<b>380.02</b>	<b>Acres</b>

**Port of Houston Authority Bayport Construction Project**

Permit Number	Type of Activity	Start Date	Completion Date	Permit Plans/Figures (Fig)	CADD Drawing Number PHA Files
	<b>Completed/Constructed</b>				
SWG-1998-01818	Phase 1 (Wharf 3) Construction	Aug-08	Jun-10	Figs 2,5	C-70-1-D09
SWG-1998-01818	Maintenance and Repair Building Construction	Sep-09	Jan-11	Fig 2	C70-1-S11
SWG-1998-01818	Bayport Administration Building Construction	Sep-09	Jan-11	Fig 2	C70-1-D03
SWG-1998-01818	Container Yard Phase 1 Stage 2 (CY2N and CY3S)	May-09	Sep-10	Fig 9	C70-1-D04
SWG-1998-01818	138kV Substation Expansion	Jul-09	Mar-10	Fig 2	C70-D16-003
SWG-1998-01818	Marine Emergency Building Construction	Nov-09	May-11	Fig 2	C70-D14-003
SWG-1998-01818	Construct Temporary Truck Queuing Area and Empty Chassis Yard	Jan-10	Jul-10	NA	C70-D05-001
SWG-1998-01818	Wharf Cranes 207, 208, 209 - Install Power and Communication Lanes	Feb-10	May-10	Figs 2, 5	C70-D16-004
SWG-1998-01818	Construct West End Sight and Sound Berm	Mar-10	Jul-10	Figs 12,15,16	C70-D24-001
SWG-1998-01818	Landscape West End Sight and Sound Berm	Jun-10	Oct-10	Figs 12,15,16	C70-D15-001
SWG-1998-01818	Maintenance Dredging at Bayport Wharf 3	Sep-10	Nov-10	Fig 6	C70-D13-001
SWG-1998-01818	Stevedore Support Building Nos. 2 and 3 at Bayport Terminal	Nov-10	Aug-12	Fig 2	C70-D04-005
SWG-1998-01818	Repair Exit Canopy at Bayport - Damage Claim No. H-3046	Nov-10	Dec-10	Fig 2	C70-D04-006
SWG-1998-01818	Convert Temporary Building Area to Container Yard at Bayport Terminal	May-11	Aug-11	Fig 2	C70-D04-004
SWG-1998-01818	Re-Issued Security System for the Buildings and Phase 1 Stage 2 Container Yard at Bayport Terminal	Mar-11	Oct-12	Fig 2	C70-D09-006
SWG-1998-01818	Construct Phase 3 Entry and Exit Gate at Bayport Terminal	May-11	Oct-13	Fig 2	C70-D17-003
SWG-1998-01818	Recoat Fender Panels and Repair Bullnose at Phase 1A Wharf at Bayport Terminal	Aug-11	Feb-12	Fig 2, 5	C70-D02-001
SWG-1998-01818	Construct Phase 3 Entry Gate OCR Canopy at Bayport Terminal	Dec-11	Aug-12	Fig 2	C70-D04-007
SWG-1998-01818	Maintenance Dredging at Bayport Channel - 2012	May-12	Jun-12	Fig 6	C70-D13-002
SWG-1998-01818	Construct Port Road West Bound Bypass at Bayport Terminal	Jul-13	Nov-13	Fig 2	C70-D06-001
SWG-1998-01818	Install Phase 3 Entry and Exit Gate Security System at Bayport Terminal Complex	Nov-13	Jul-14	Fig 2	C70-D17-004
SWG-1998-01818	Ship Channel Improvement Project	Jul-14	Jan-16	Fig 2	C70-D13-004
SWG-1998-01818	Container Yard 6 North Construction	Feb-15	Mar-16	Fig 2	C70-D01-002
SWG-1998-01818	Container Yard 2 Perimeter Security Cameras at Bayport	Sep-14	Apr-15	Fig 2	C70-D09-007
SWG-1998-01818	Material Relocation Agreement	Jul-14	Mar-16	Fig 2	C70-D15-004
SWG-1998-01818	Bayport - Construct and Vegetate Middle Sight and Sound Berm	Oct-14	May-16	Fig 2	C70-D15-004
SWG-1998-01818	Freight Station Road Construction	Nov-15	Nov-16	Fig 2	C70-D06-002
SWG-1998-01818	Construct Eight Inbound Lanes for Entry Gate	Dec-15	Aug-16	Fig 2	C70-D17-005
SWG-1998-01818	Wharf 6 - Installation of Electrical Infrastructure for Future Cranes	May-16	Dec-16	Fig 2	C70-D16-005
SWG-1998-01818	Container Yard 6 South Construction	Aug-16	Aug-19	Fig 2	C70-D01-003
SWG-1998-01818	Wharf 2 Construction	Aug-16	Dec-17	Fig 2	C70-D01-001
SWG-1998-01818	Placement Area Material Management	Jun-20	Dec-20	Fig 2	C70-C15-006
SWG-1998-01818	Magellan and Seadrift Pipeline Relocation - Rail Spur Construction	May-16	Dec-16	Fig 2	By others
SWG-1998-01818	Storm Water Trench Drain Repair Damage Claim	Feb-18	Aug-18	Fig 2	C70-D21-001
SWG-1998-01818	Revised Vegetation of Middle Sight and Sound Berm	Jun-18	Oct-18	Fig 2	C70-D05-005
SWG-1998-01818	West Empty Yard Construction	May-17	Aug-18	Fig 2	C70-D01-004
SWG-1998-01818	Relocation of Praxair Pipeline Exxon Mobile Coordination	May-19	Aug-19	Fig 2	19-018-301
SWG-1998-01818	Radio Tower	May-20	Sep-20	Fig 2	By others
SWG-1998-01818	Bayport Cruise Terminal Complex Phase 1 - Passenger Access Gangway System	Jun-06	Apr-10	Fig 2	C70-1-D15

Permit Number	Type of Activity	Start Date	Completion Date	Permit Plans/Figures (Fig)	CADD Drawing Number PHA Files
SWG-1998-01818	Bayport Landscaping Phase 1A - Sight and Sound Berms	Jan-07	Oct-08	Fig 2	C70-1A-D10-004
SWG-1998-01818	Bayport Marine Gate Expansion, Stage 2 - Addition of Two (2) Platform Scales	Nov-07	Jun-05	Fig 2	C70-D17-001
SWG-1998-01818	Bayport Marine Gate Expansion, Stage 2 - Canopies, Lane Booths and Pedestals	Jul-07	Jun-05	Fig 2	C70-D04-001-A
SWG-1998-01818	Bayport Marine Gate Expansion, Stage 2 - Civil and Electrical	Jul-07	Jun-05	Fig 2	C70-D04-002
SWG-1998-01818	Bayport Terminal Complex 15kV Installation for Bayport Admin and M&R Buildings	Jun-08	Jul-05	Fig 2	C70-D16-002
SWG-1998-01818	Bayport Terminal Complex Phase 1 - Container Yard	Nov-06	Jun-08	Fig 2	C70-1-D11
SWG-1998-01818	Bayport Terminal Complex Phase 1 - Cruise Terminal Building	Jan-06	Jan-10	Fig 2	C70-1-D06
SWG-1998-01818	Bayport Terminal Complex Phase 1 - Gate Facility	Jan-06	Dec-07	Fig 2	C70-1-D02
SWG-1998-01818	Bayport Terminal Complex Phase 1 - Port Road	Nov-05	Dec-07	Fig 2	C70-1-D01
SWG-1998-01818	Bayport Terminal Complex Phase 1 - Site and Utilities	Jan-06	Apr-08	Fig 2	C70-1-D13
SWG-1998-01818	Bayport Terminal Complex Phase 1 - Stage 2 Container Yard	Jun-08	Dec-09	Fig 2	C70-1-D04
SWG-1998-01818	Bayport Terminal Complex Phase 1 - Wharf	Feb-07	May-08	Fig 2,5	C70-1-D09
SWG-1998-01818	Bayport Terminal Complex Phase 1 - Wharf and Dredging	Jan-06	Jan-08	Fig 2, 5, 6	C70-1-D12
SWG-1998-01818	Bayport Terminal Complex Phase 1 Wharf - Advanced Dredging and Moorings	Dec-07	Nov-08	Fig 2	C70-1-D13
SWG-1998-01818	Bayport Terminal Complex Phase 1A - Amenities Building	Jul-05	Jun-06	Fig 2	C70-1A-D04
SWG-1998-01818	Bayport Terminal Complex Phase 1A - Amenities Building (Revised)	May-07	Jan-09	Fig 2	C70-1A-D04
SWG-1998-01818	Bayport Terminal Complex Phase 1A - Container Yard	Jan-05	Nov-06	Fig 2	C70-1A-D02
SWG-1998-01818	Bayport Terminal Complex Phase 1A - Electrical Substation	Oct-04	Feb-06	Fig 2	C70-1A-D07
SWG-1998-01818	Bayport Terminal Complex Phase 1A - Elevated Storage Tank	Jun-05	Sep-06	Fig 2	C70-1A-D05
SWG-1998-01818	Bayport Terminal Complex Phase 1A - Lift Station and Force Main	Oct-05	Sep-06	Fig 2	C70-1A-D06
SWG-1998-01818	Bayport Terminal Complex Phase 1A - Wharf and Dredging	Jun-04	Apr-09	Fig 2,5,6	C70-1A-D01
SWG-1998-01818	Bayport Terminal Complex Security and Telecommunication Systems Integration	Jul-07	Dec-07	Fig 2	(SSI NO. #)
SWG-1998-01818	Fill Placement at Bayport	Jun-07	Oct-07	Fig 2	C70-1-D18

**Previously Authorized Projects (Only until 2027)**

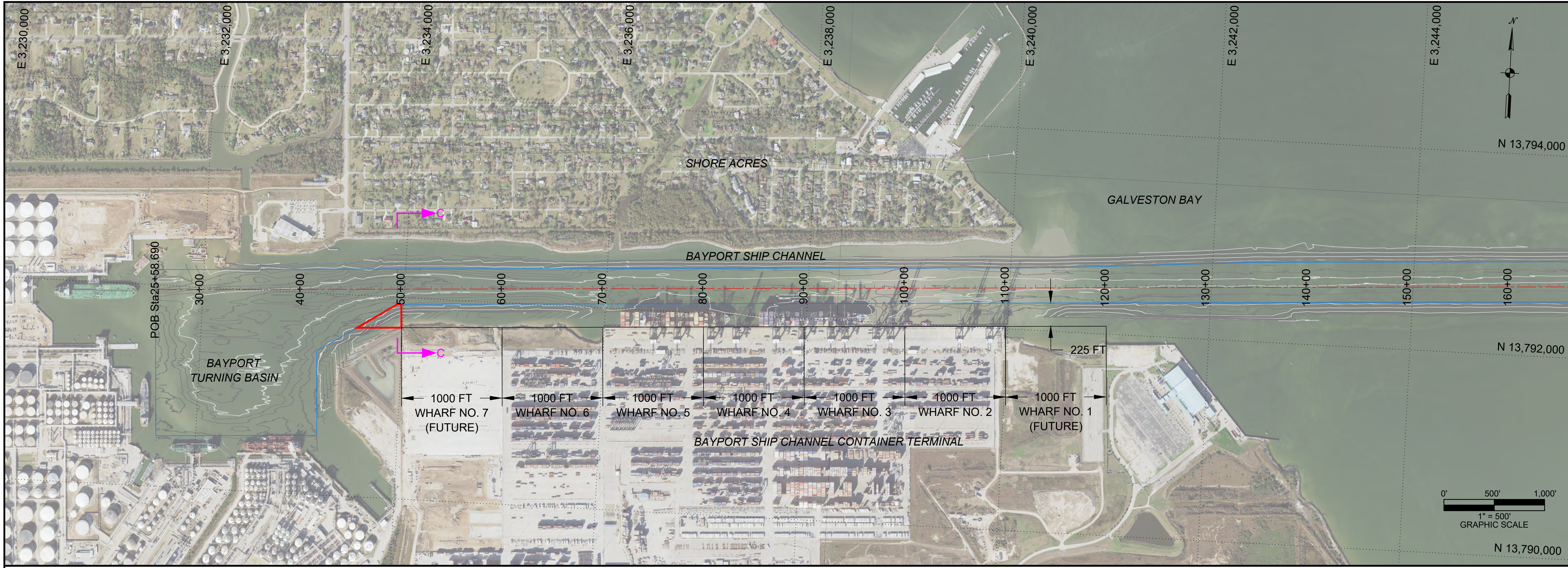
SWG-1998-01818	3 STS Cranes - Wharf 7	04/23/2024	9/30/2025	Fig 2,5,6	NA
SWG-1998-01818	3 STS Cranes - Wharf 7 IT	04/23/2024	12/31/2025	Fig 2,5,6	NA
SWG-1998-01818	3 STS Cranes - Wharf 7-Inspection	05/28/2024	12/31/2025	Fig 2,5,6	NA
SWG-1998-01818	3 STS Cranes - Wharf 7-Specs	01/23/2024	12/31/2025	Fig 2,5,6	NA
SWG-1998-01818	Stevedore Support Bldg - Wharf 7- Const	04/23/2024	12/31/2025	Fig 2,5,6	NA
SWG-1998-01818		09/24/2024	12/31/2025	Fig 2,5,6	NA
SWG-1998-01818	Stevedore Support Bldg - Wharf 7- Design	04/25/2023	12/31/2025	Fig 2,5,6	NA
SWG-1998-01818	Wharf 7 - CPS	04/23/2024	12/31/2025	Fig 2,5,6	NA
SWG-1998-01818	Wharf 7 - Design	04/25/2023	12/31/2025	Fig 2,5,6	NA
SWG-1998-01818	Wharf 7 Construction	04/23/2024	12/31/2025	Fig 2,5,6	NA
SWG-1998-01818	Wharf 7 Security Infrastructure	09/23/2025	12/31/2025	Fig 2,5,6	NA
SWG-1998-01818	3 STS Cranes - Berth 1-Inspection	04/27/2027	12/31/2028	Fig 2,5,6	NA
SWG-1998-01818	3 STS Cranes- Wharf 1-Specs	01/26/2027	12/31/2028	Fig 2,5,6	NA
SWG-1998-01818	3 STS Cranes- Wharf 1	04/28/2026	9/30/2027	Fig 2,5,6	NA
SWG-1998-01818	3 STS Cranes- Wharf 1 IT	04/27/2027	12/31/2028	Fig 2,5,6	NA
SWG-1998-01818	SSB #5-Berth 1 - Cons IT	04/27/2027	12/31/2028	Fig 2,5,6	NA
SWG-1998-01818	SSB #5-Berth 1 - Construction	04/27/2027	12/31/2028	Fig 2,5,6	NA
SWG-1998-01818	SSB #5-Berth 1-Design	04/28/2026	12/31/2028	Fig 2,5,6	NA

Permit Number	Type of Activity	Start Date	Completion Date	Permit Plans/Figures (Fig)	CADD Drawing Number PHA Files
SWG-1998-01818	Wharf 1 & Dredging -CPS	04/27/2027	12/31/2028	Fig 2,6	NA
SWG-1998-01818	Wharf 1 & Dredging -Design	04/28/2026	12/31/2028	Fig 2,6	NA
SWG-1998-01818	Wharf 1 Construction	04/27/2027	12/31/2028	Fig 2,5,6	NA
SWG-1998-01818	Wharf 1 Dredging	04/27/2027	12/31/2028	Fig 2,6	NA
SWG-1998-01818	Bayport Terminal Gate - Last 6 Lanes and TWIC Lanes - Construction	02/23/2021	12/31/2021	Fig 2	NA
SWG-1998-01818	Bayport Terminal Gate - Last 6 Lanes and TWIC Lanes - Construction IT	04/30/2021	12/31/2021	Fig 2	NA
SWG-1998-01818	Bayport Terminal Gate - Last 6 Lanes and TWIC Lanes - Design	01/26/2021	12/31/2021	Fig 2	NA
SWG-1998-01818	9 RTG's for CY 7 IT	04/27/2021	9/30/2022	Fig 2	NA
SWG-1998-01818	3 STS Cranes - Berth 6	04/27/2021	12/31/2022	Fig 2	NA
SWG-1998-01818	3 STS Cranes - Berth 6 IT	04/27/2021	12/31/2022	Fig 2	NA
SWG-1998-01818	3 STS Cranes - Berth 6-Specs	01/26/2021	12/31/2022	Fig 2	NA
SWG-1998-01818	3 STS Cranes Berth 6-Inspection	05/25/2021	12/31/2022	NA	NA
SWG-1998-01818	SSB #4 - Wharf 6 - Cons IT	04/27/2021	12/31/2022	Fig 2	NA
SWG-1998-01818	SSB #4 - Wharf 6 - Construction	04/27/2021	12/31/2022	Fig 2	NA
SWG-1998-01818	Wharf 6 Construction	04/27/2021	12/31/2022	Figs 2,5,6	NA
SWG-1998-01818	Wharf 6 Construction-CPS	04/27/2021	12/31/2022	Figs 2,5,6	NA
SWG-1998-01818	Wharf 6-Power-Installation	04/27/2021	12/31/2022	Fig 2	NA
SWG-1998-01818	9 RTG Cranes Wharf 1	06/23/2026	5/31/2027	Fig 2	NA
SWG-1998-01818	Pasadena Waterline - Phase 2 - Design & Construction	08/22/2023	8/31/2024	Fig 2	NA
SWG-1998-01818	BPT Fill Dirt	03/28/2023	9/30/2024	Fig 2	NA
SWG-1998-01818		10/22/2024	9/30/2025	Fig 2	NA
SWG-1998-01818		12/16/2025	9/30/2026	Fig 2	NA
SWG-1998-01818	CY1N Construction	08/24/2021	8/31/2022	Fig 2	NA
SWG-1998-01818	CY1N Construction IT	08/24/2021	8/23/2022	Fig 2	NA
SWG-1998-01818	9 RTG CY1S	01/23/2024	12/31/2024	Fig 2	NA
SWG-1998-01818	9 RTG CY1S IT	05/21/2024	12/31/2024	Fig 2	NA
SWG-1998-01818	Container Yard CY1S	02/20/2024	12/31/2025	Fig 2	NA
SWG-1998-01818	Container Yard CY1S CPS	02/20/2024	12/31/2025	Fig 2	NA
SWG-1998-01818	Container Yard CY1S IT	05/21/2024	12/31/2025	Fig 2	NA







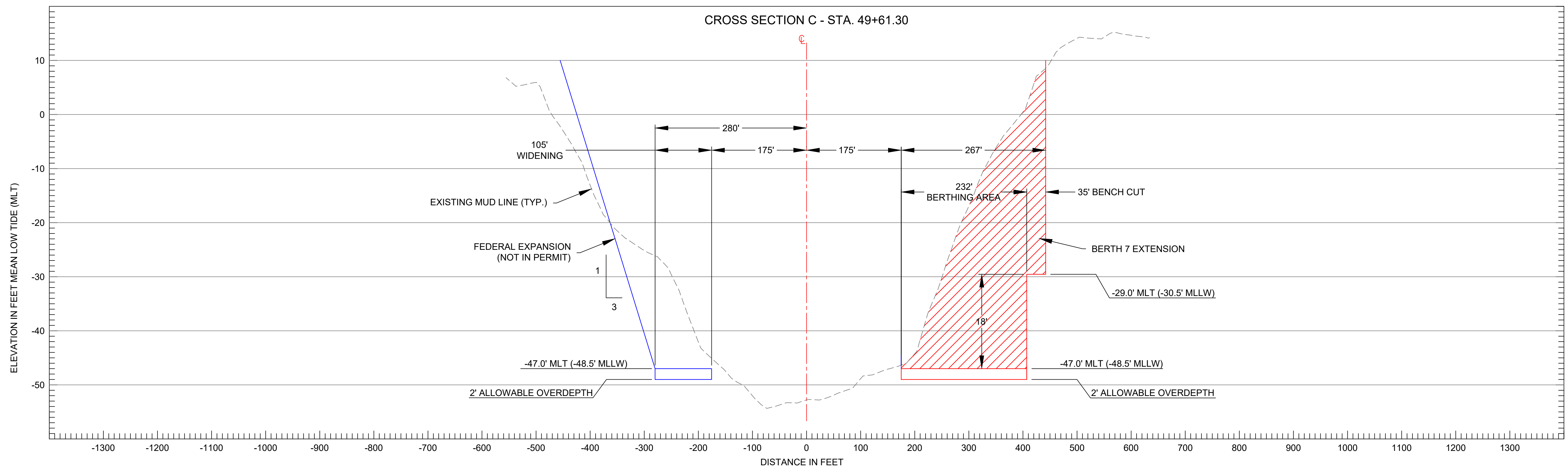


Bayport Ship Channel  
Individual Permit Application

### Proposed Berth 7 Expansion Footprint Plan View & Cross Section

County: Harris  
Application By: Port of Houston Authority

State: Texas  
Date: October 2020



PLAN VIEW LEGEND  
PROPOSED BERTH 7 EXTENSION  
SURVEY CONTOURS  
FEDERAL EXPANSION TOE LINE  
BERTH 7 EXTENSION

#### NOTES

- THE CHANNEL AND BERTHS ARE PREVIOUSLY AUTHORIZED TO 45 FEET MEAN LOW TIDE (MLT) WITH TWO FEET OF ADVANCED MAINTENANCE (REQUIRED) AND TWO FEET OF ALLOWABLE OVERDEPTH. -45 FEET MLT = -46.5 MLLW.
- ALL MATERIAL WITHIN THE REQUIRED DEPTH TEMPLATE MUST BE REMOVED INCLUSIVE OF SLOPE.

HORIZONTAL SCALE: 1" = 100'  
VERTICAL SCALE: 1" = 10'

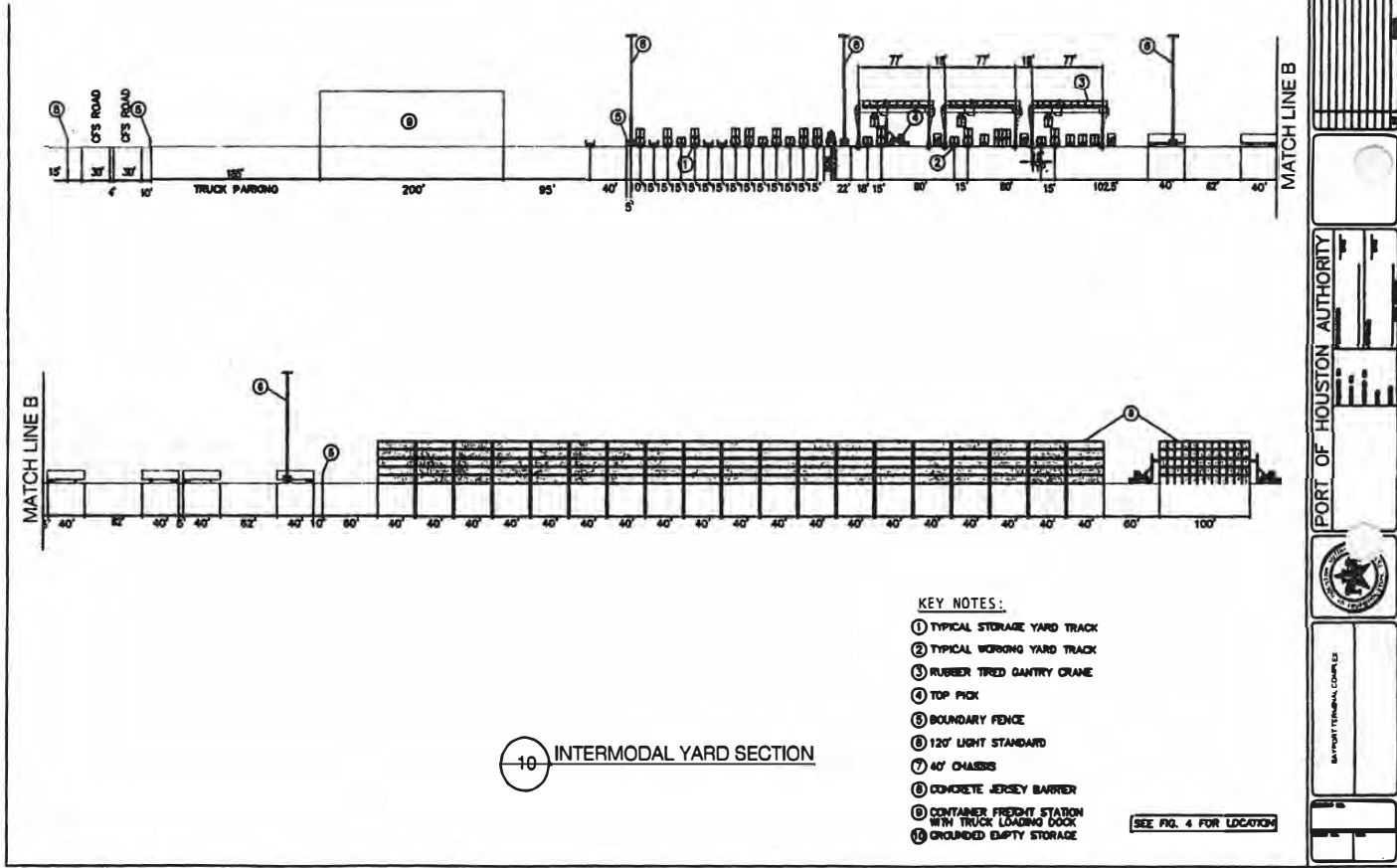




**FIG. 10 - INTERMODAL YARD CROSS SECTION**

OMITTED PLANS

Port of Houston Authority No. 21520(Revised)  
Galveston Bay, along the Bayport Ship Channel,  
City of Pasadena, Harris County, Texas.  
(Revised May 2003)



10 INTERMODAL YARD SECTION

- KEY NOTES:
- ① TYPICAL STORAGE YARD TRACK
  - ② TYPICAL WORKING YARD TRACK
  - ③ RUBBER Tired GANTRY CRANE
  - ④ TOP PICK
  - ⑤ BOUNDARY FENCE
  - ⑥ 120' LIGHT STANDARD
  - ⑦ 40' CHASSIS
  - ⑧ CONCRETE JERSEY BARRIER
  - ⑨ CONTAINER FREIGHT STATION WITH TRUCK LOADING DOCK
  - ⑩ CIRCUMFERENTIAL STORAGE

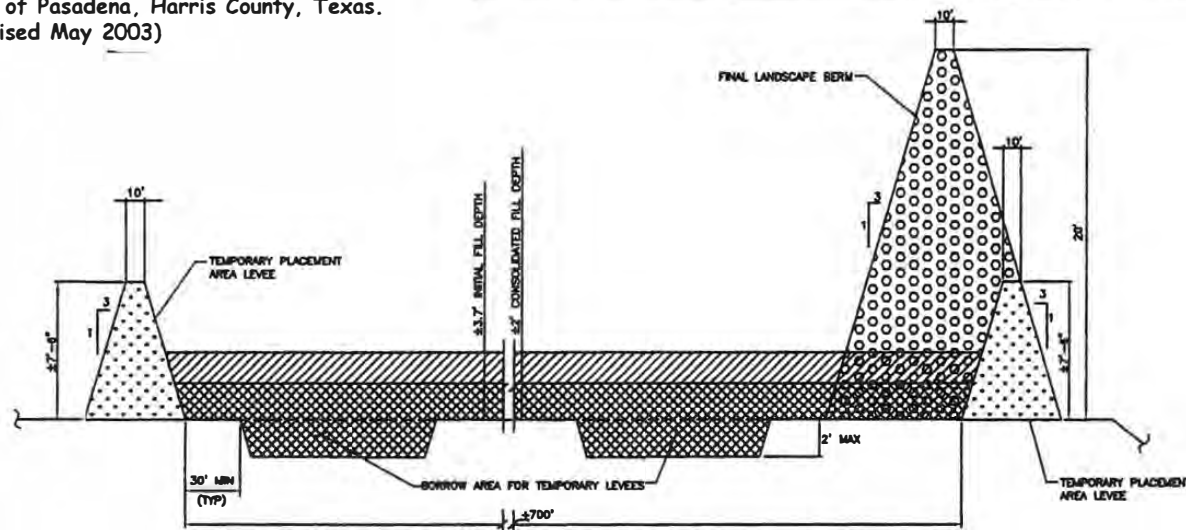
SEE FIG. 4 FOR LOCATION



PERMITTED PLANS

FIG. 12 - DREDGED MATERIAL PLACEMENT AND BERM CONSTRUCTION

Port of Houston Authority No. 21520(Revised)  
Galveston Bay, along the Bayport Ship Channel,  
City of Pasadena, Harris County, Texas.  
(Revised May 2003)



12 SECTION  
N.T.S.

BERM CONSTRUCTION SEQUENCE (BASED ON HYDRAULIC DREDGING ONLY)

- 1 A DREDGED MATERIAL DRYING AREA WILL BE CONSTRUCTED PARALLEL AND ADJACENT TO THE ALIGNMENT OF THE PROPOSED BERM. THIS DRYING AREA WILL BE APPROXIMATELY 800 FEET WIDE ON AVERAGE. TEMPORARY PLACEMENT AREA CONTAINMENT LEVELS WILL BE CONSTRUCTED USING BORROW MATERIAL FROM INSIDE THE CONTAINMENT AREA.
- 2 THE DREDGED MATERIAL WILL BE PUMPED INTO THE CONTAINMENT AREA TO AN AVERAGE DEPTH OF APPROXIMATELY 3.7 FEET. THIS MATERIAL WILL THEN BE MANAGED AND DRIED UNTIL IT CONSOLIDATES TO A DRIED DEPTH OF APPROXIMATELY 2 FEET.
- 3 ONCE THE MATERIAL IS SUFFICIENTLY DRY, IT WILL BE USED TO CONSTRUCT A NOISE AND SIGHT BARRIER BERM APPROXIMATELY 20 FEET TALL, WITH SIDE SLOPES OF 3 FEET HORIZONTAL TO 1 FOOT VERTICAL, AND A TOP WIDTH OF 10 FEET. THIS BERM WILL USE THE EXISTING EASTERN AND SOUTHERNMOST CONTAINMENT LEVEL AS A FOUNDATION.
- 4 ONCE THE BERM HAS BEEN CONSTRUCTED IT WILL BE STABILIZED WITH PLANT MATERIAL AND LANDSCAPED.

LEGEND

- TEMPORARY PLACEMENT AREA LEVEL
- UNCONSOLIDATED FILL MATERIAL
- CONSOLIDATED FILL MATERIAL
- FINAL LANDSCAPE BERM

NOTES

- 1 VERTICAL SCALE EXAGGERATED

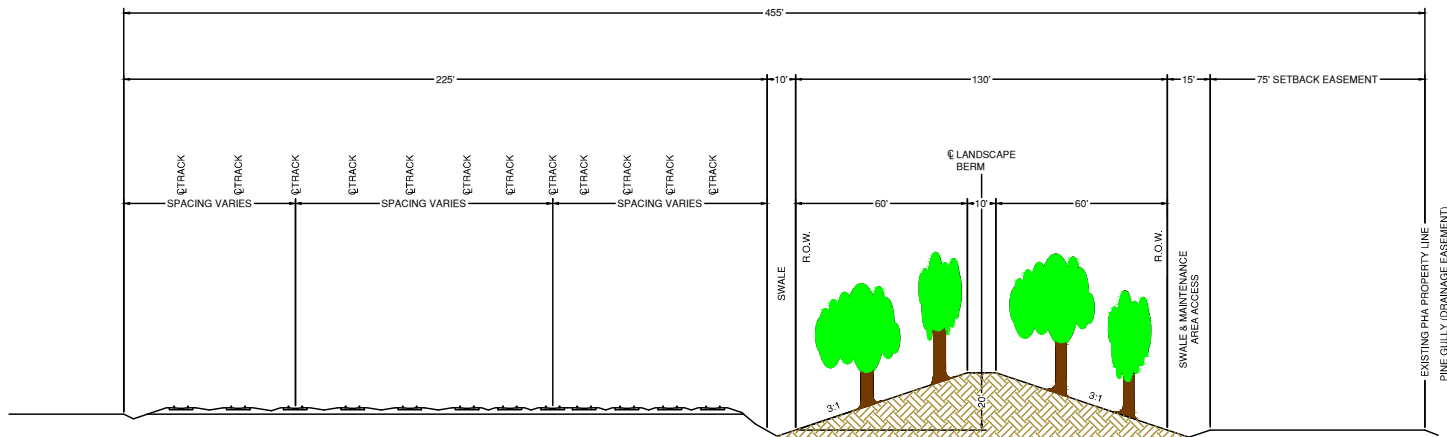
SEE FIG. 4 FOR LOCATION

PORT OF HOUSTON AUTHORITY

SUPPORT TERMINAL COMPLEX



### PORT OF HOUSTON AUTHORITY - BAYPORT TERMINAL COMPLEX FIGURE 13 - RAILROAD CORRIDOR - BERM CROSS SECTION



13 SECTION  
N.T.S.

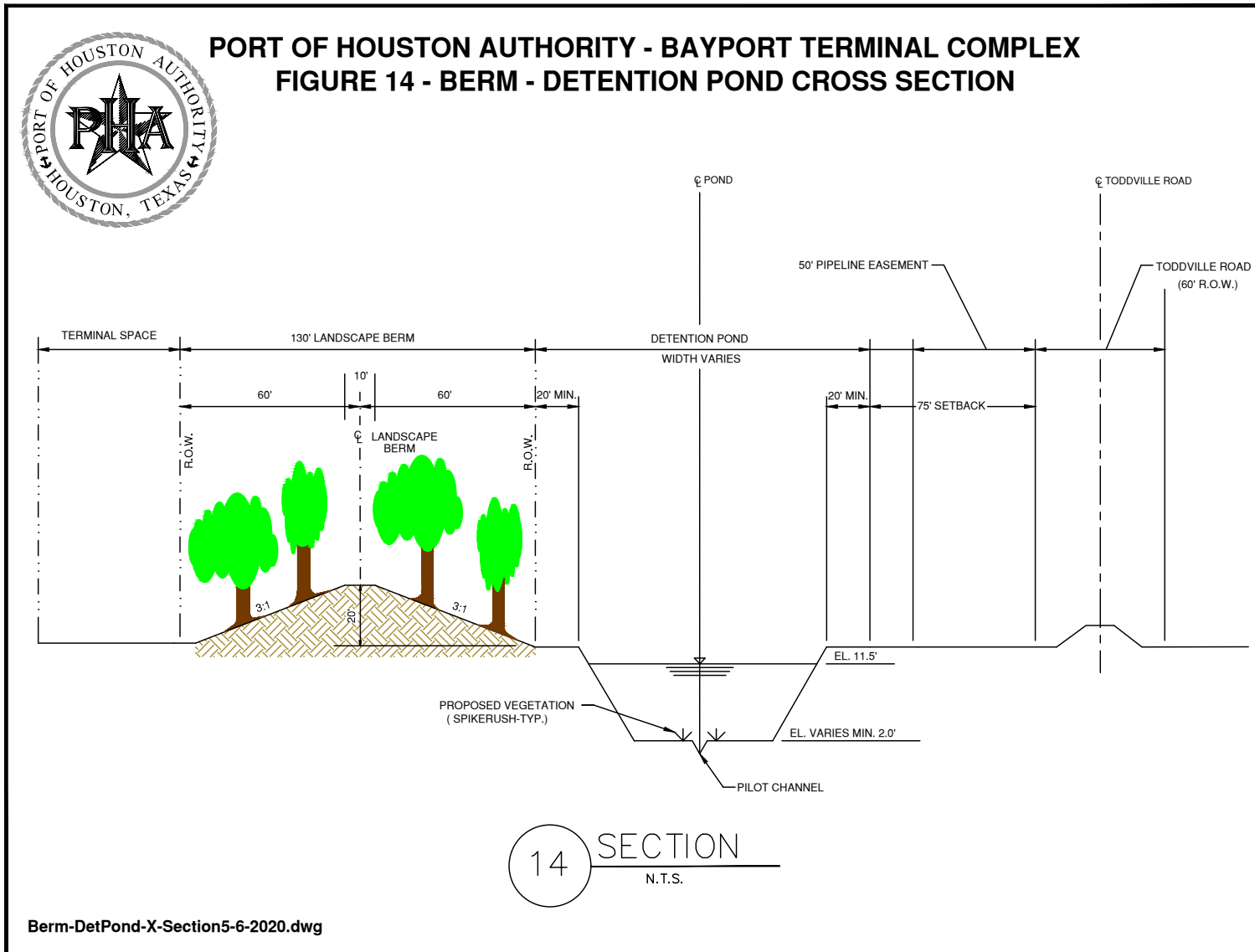


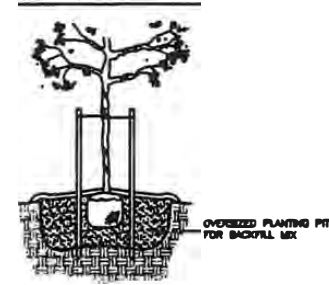


FIG. 15 - CONCEPTUAL LANDSCAPE BERM PLANTING PLAN

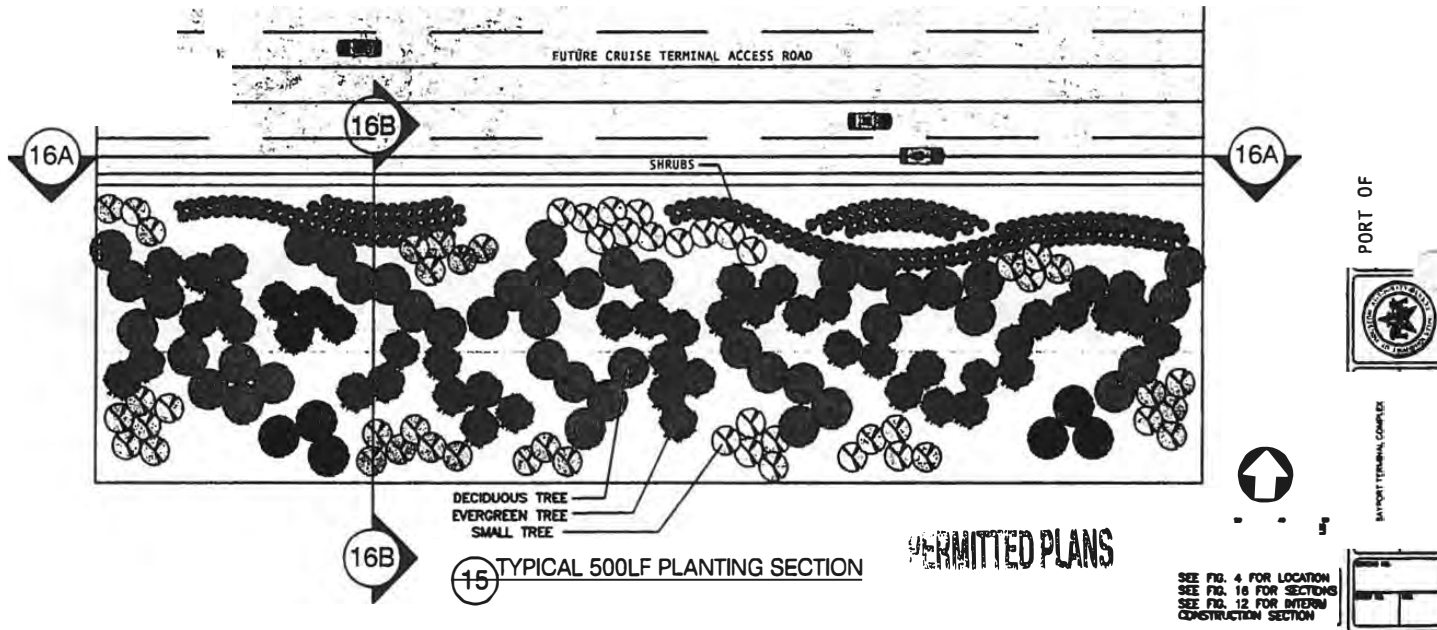
**PLANT PALETTE**

- EVERGREEN TREES**  
 CHERRY LAUREL - PRUNUS CAROLINIANA  
 LIVE OAK - QUERCUS VIRGINIANA  
 LOBLOLLY PINE - PINUS TAEDA  
 SPANISH HOLLY - ILEX X ATTENUATA 'BRANNAN'
- DECIDUOUS TREES**  
 BALD CYPRESS - TAXODIUM DISTICHUM  
 BUR OAK - QUERCUS MACROCARPA  
 CEDAR ELM - ULMUS PARVA  
 MEDICAN PLUM - PRUNUS MEDICANA  
 SHALBARD OAK - QUERCUS SCALABARDI  
 WATER OAK - QUERCUS NIGRA  
 WILLOW OAK - QUERCUS PHellos
- EVERGREEN SHRUBS**  
 DWARF BURFORD HOLLY - ILEX CORNUTA 'BURFORD'  
 DANDY HOLLY - ILEX CASPINE 'DANDY'  
 OLEANDER - OLEANDER FUNDENS  
 FORTY'S HOLLY - ILEX X ATTENUATA 'FORTY'  
 TEXAS SAGE - LEUCOPHYLLUM FRUTICOSUM  
 WAX MYRTLE - MYRTICA CERIFERA  
 YAPON - ILEX VOMITORIA

- DECIDUOUS SHRUBS**  
 AMERICAN BEAUTYBERRY - CALICAPPA AMERICANA VAR. AMERICANA  
 ORNATE TREE - VITEX AGALIS CASTUS  
 DECIDUOUS HOLLY - ILEX DECIDUA  
 PINK PEPPERBUSH - CLEOME ALPINA  
 SHEETSPIRE - ITEA VIRGINICA
- HERBACEOUS LAYER**  
 BAMBOO MARY - MEPLENBERGIA CUNOSA  
 BIG BLUESTEM - ANDROPOGON GERARD  
 CORALBUSH - ERYTHRA HESPERICA  
 GULF COAST MARY - MEPLENBERGIA CAPILLARS  
 ISLAND SEA OATS - CHAMANTHILUM LATIFOLIUM  
 WAXEN GRASS - MISCANTHUS SINENSIS 'TRICOLLINATUS'  
 MEXICAN FLAME GRASS - STIPA THAISESIA  
 TEXAS WAX MALLOW - MALVASCUS AMERICUS



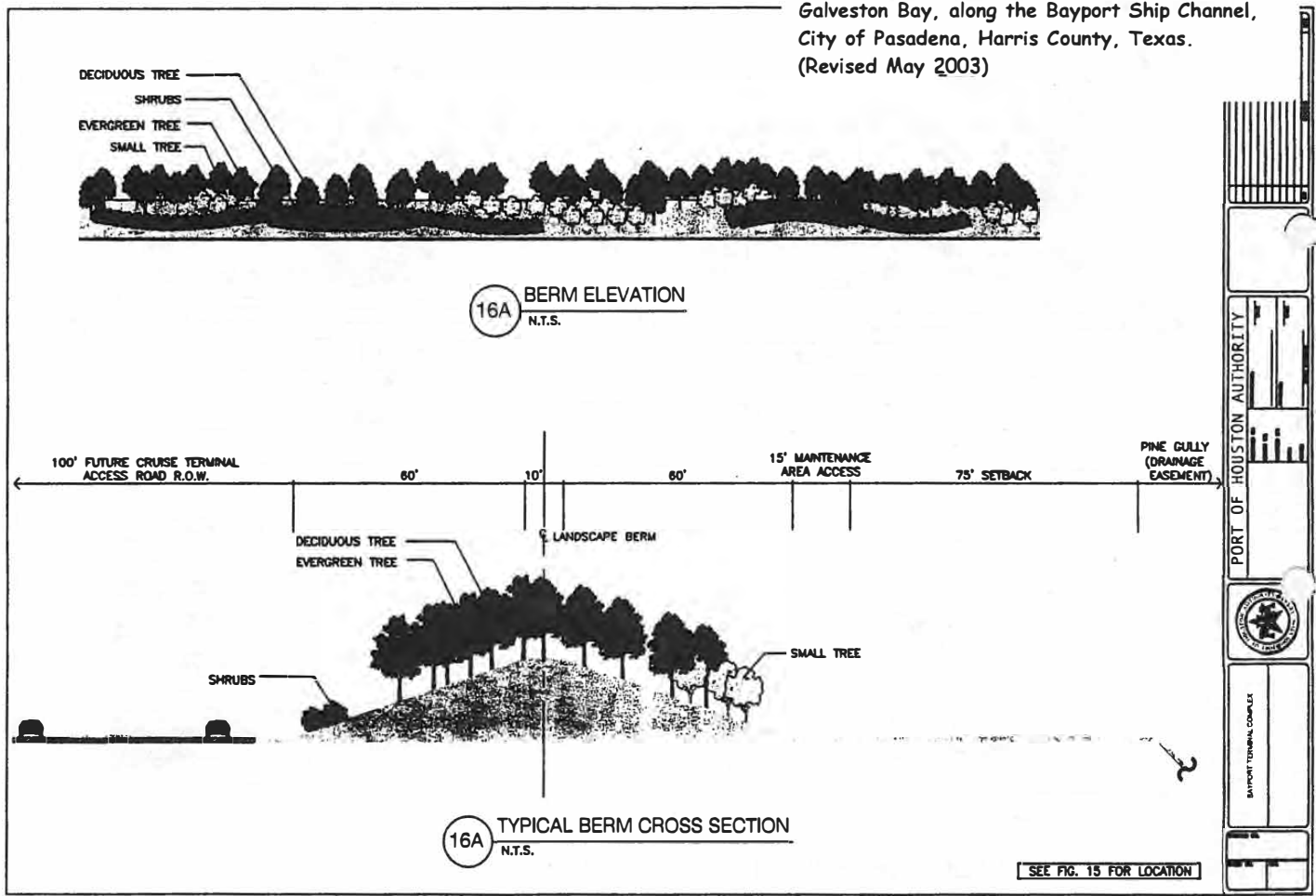
TYPICAL TREE PLANTING



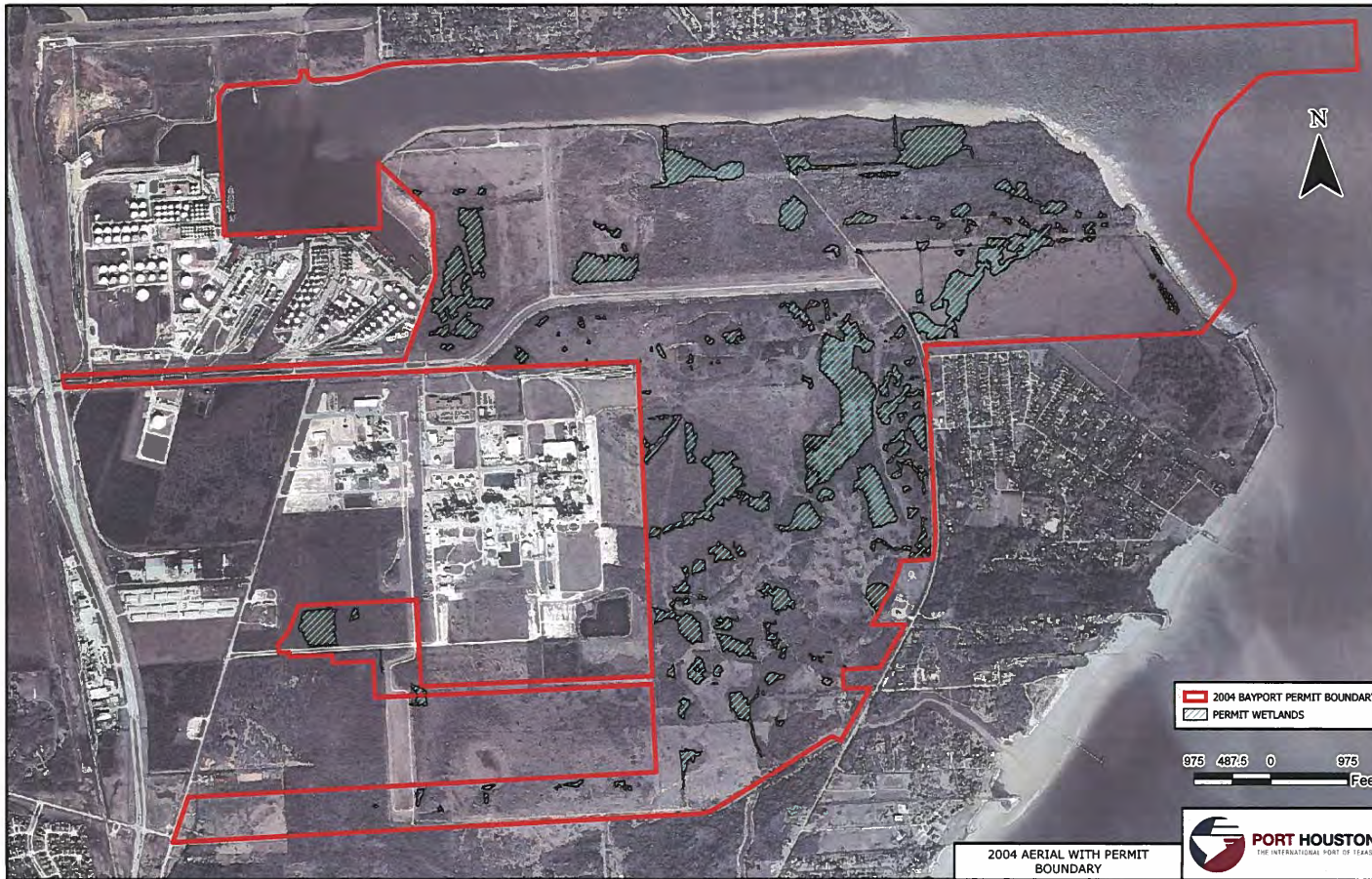
**PERMITTED PLANS**

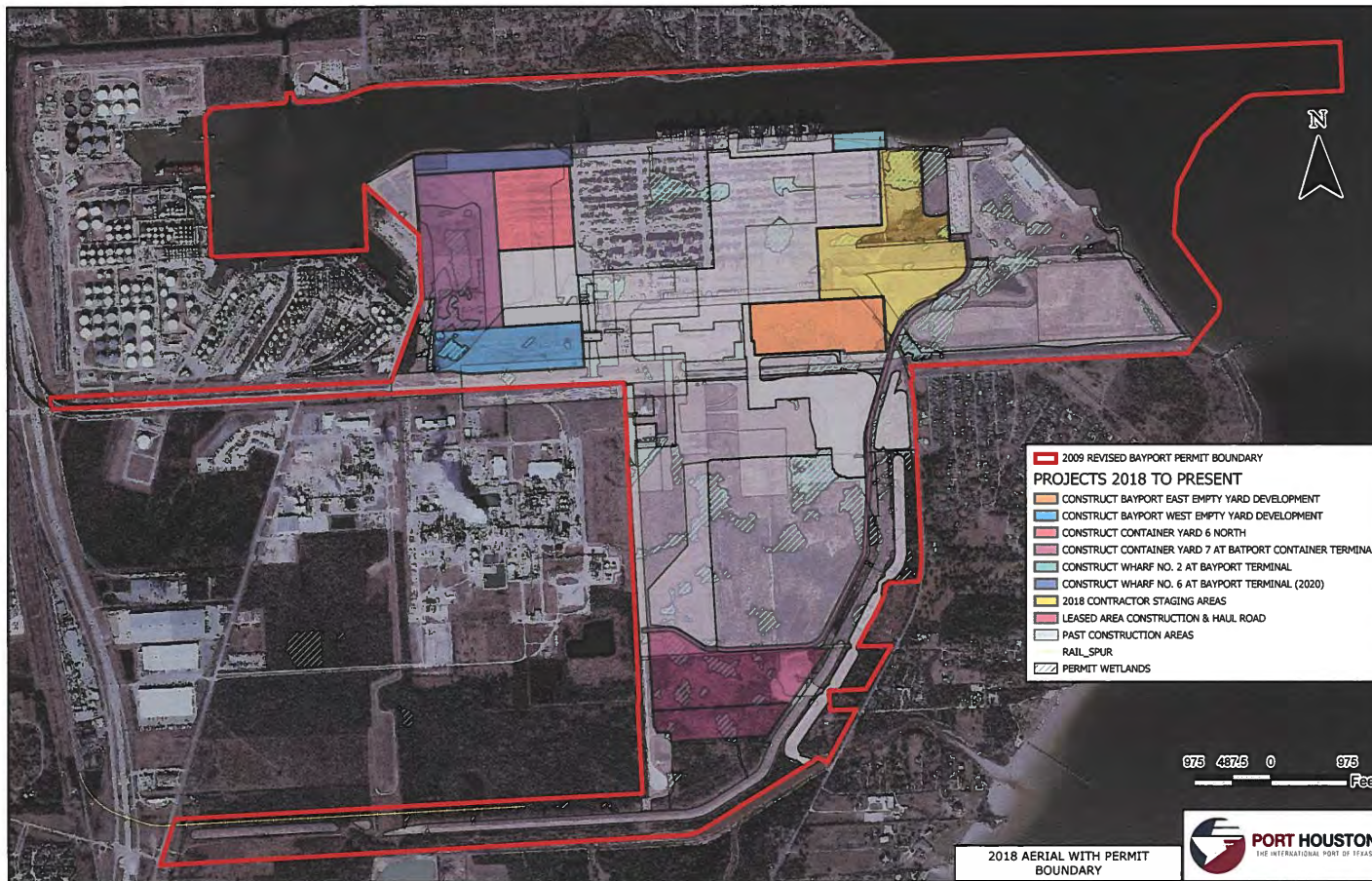
FIG. 16 - CONCEPTUAL LANDSCAPE BERM ELEVATION AND SECTION

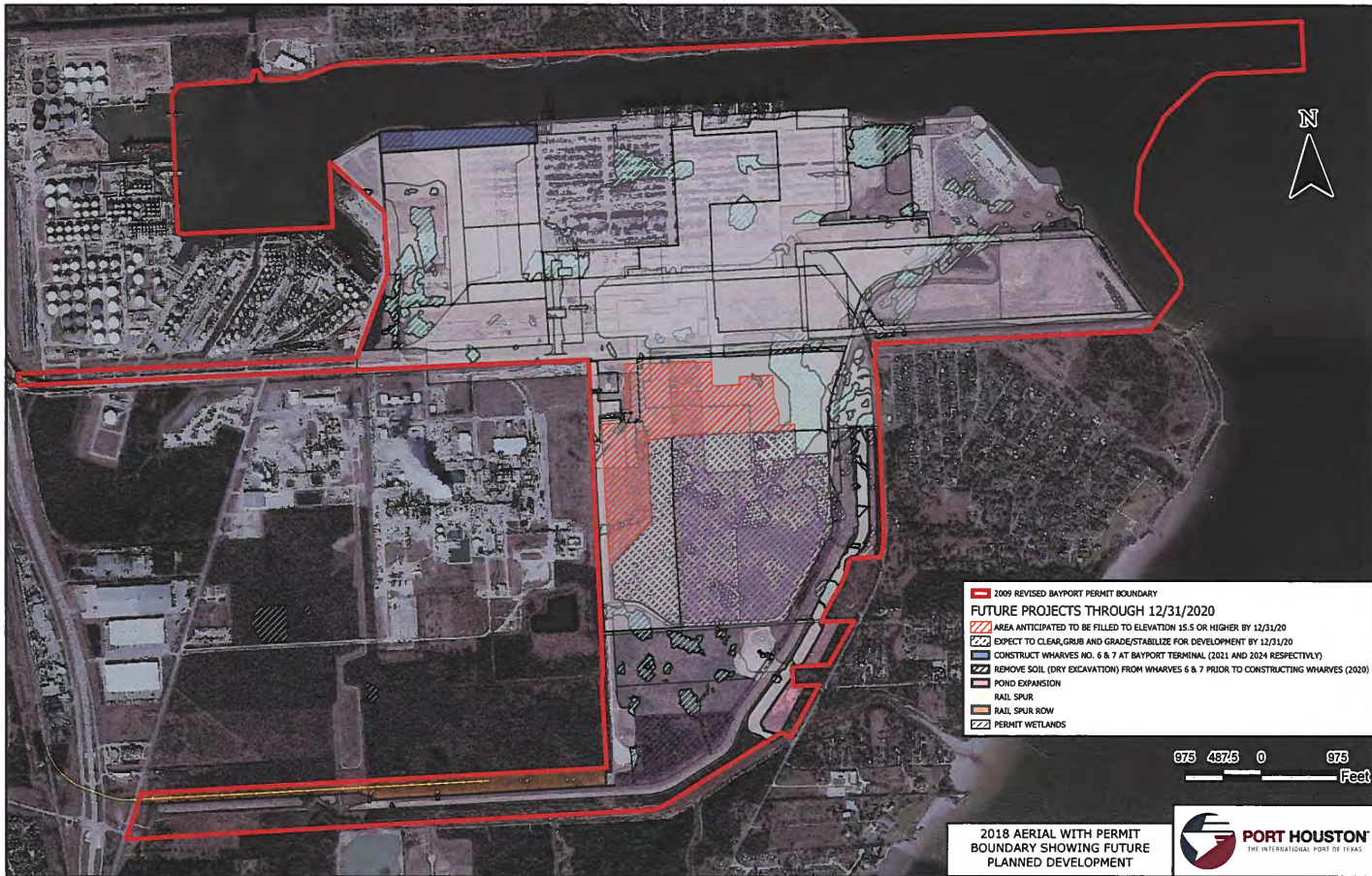
Port of Houston Authority No. 21520(Revised)  
Galveston Bay, along the Bayport Ship Channel,  
City of Pasadena, Harris County, Texas.  
(Revised May 2003)





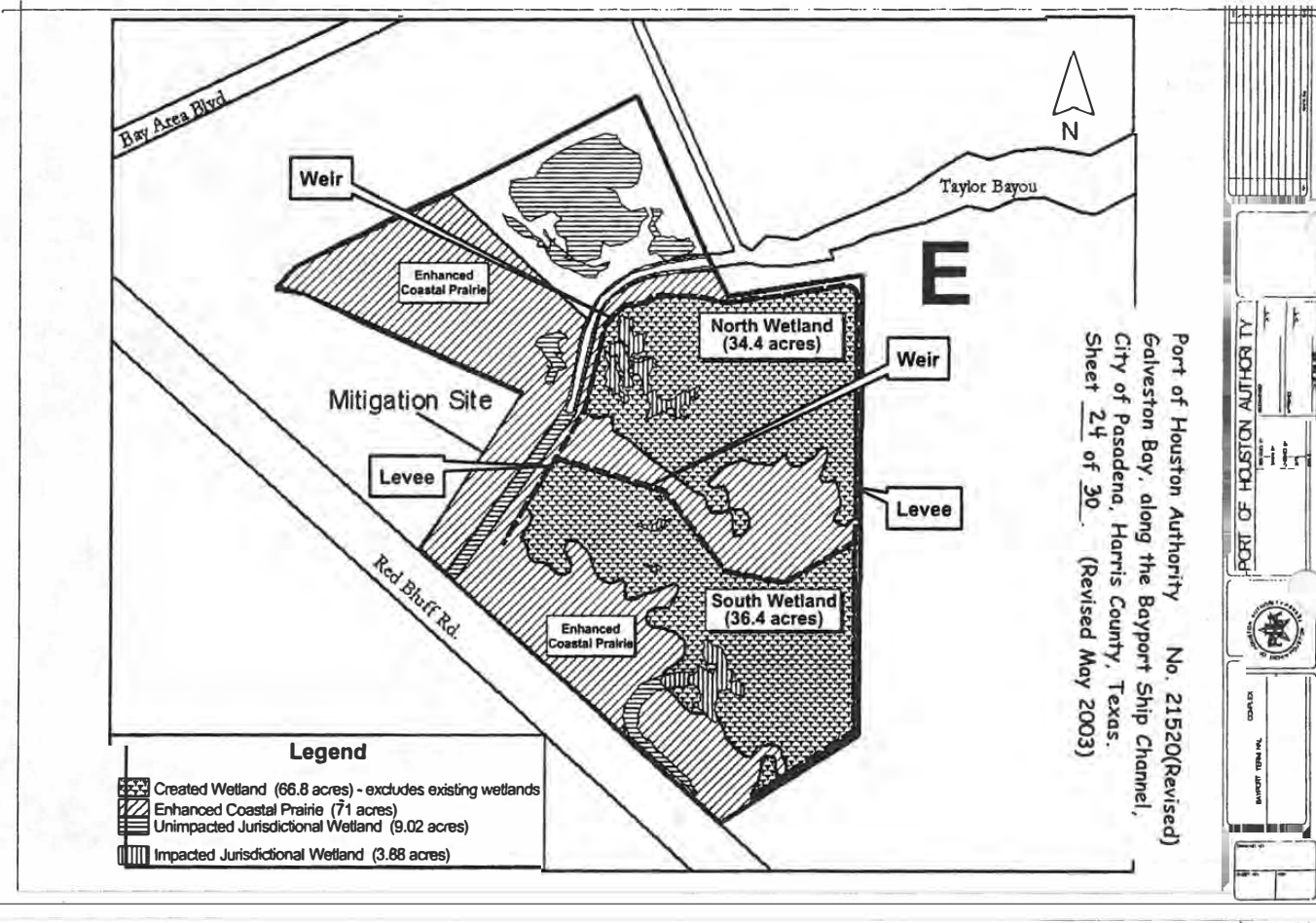


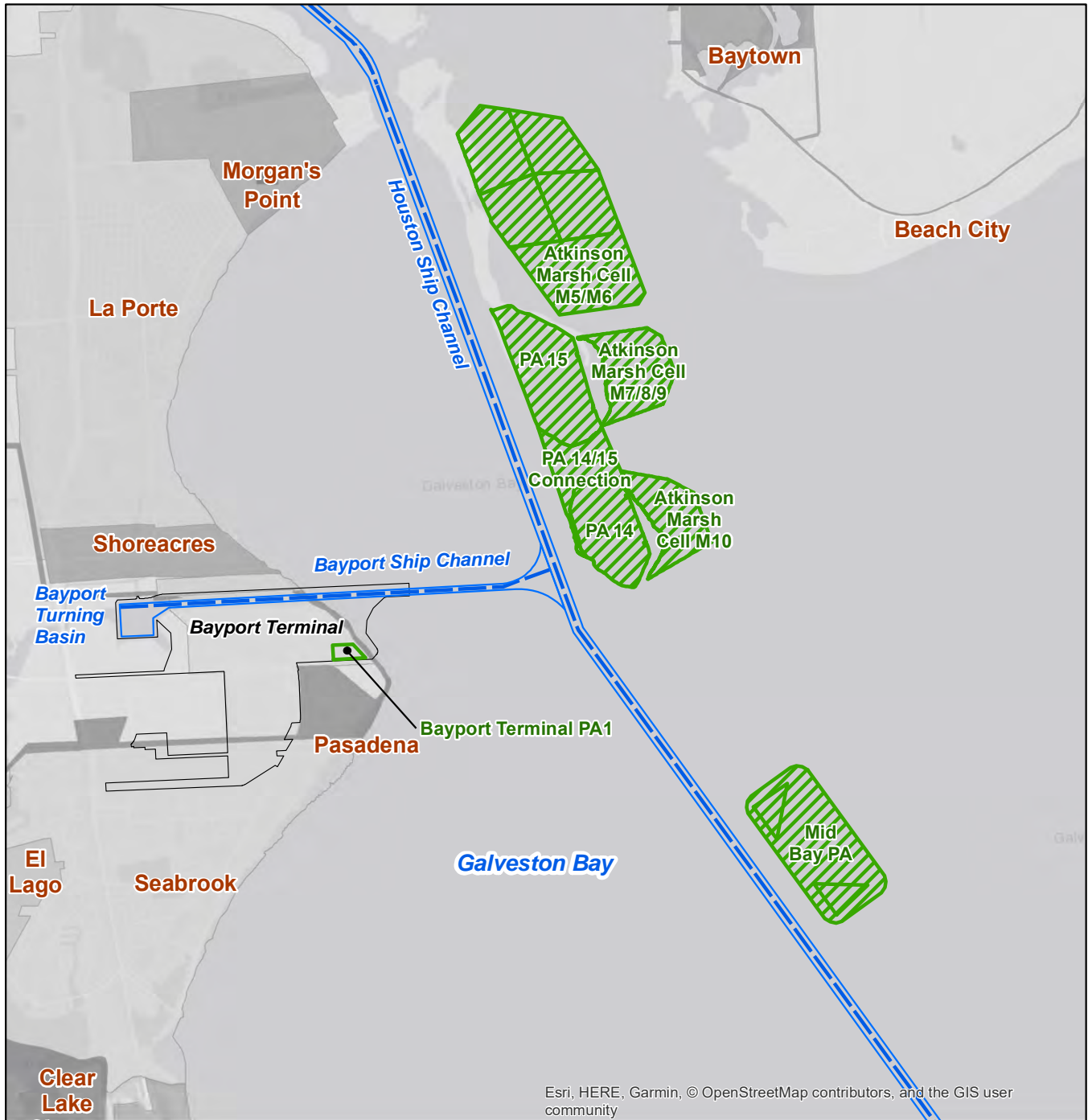




PERMITTED PLANS

FIG. 23A - JURISDICTIONAL WETLANDS & FINAL MITIGATION PLAN





Esri, HERE, Garmin, © OpenStreetMap contributors, and the GIS user community

**Legend**

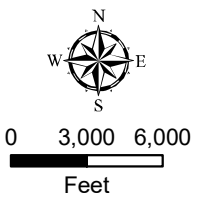
□ Bayport Terminal

**Proposed Project**

▨ Placement Areas

--- Existing Channel Limits (Bottom Width Extents Shown)

— Channel Centerline



Bayport Ship Channel Container Terminal  
Permit Application Renewal SWG-1998-01818

**Project Area  
and Proposed Project**

County: Chambers and Harris State: Texas

Application By: Port of Houston Authority

Sheet: 25 of 31 Date: October 2020



FIG. 25 - PROPOSED PINE GULLY EROSION PROTECTION

Port of Houston Authority No. 21520(Revised)  
Galveston Bay, along the Bayport Ship  
Channel, City of Pasadena, Harris County,  
Texas. (Revised May 2003)

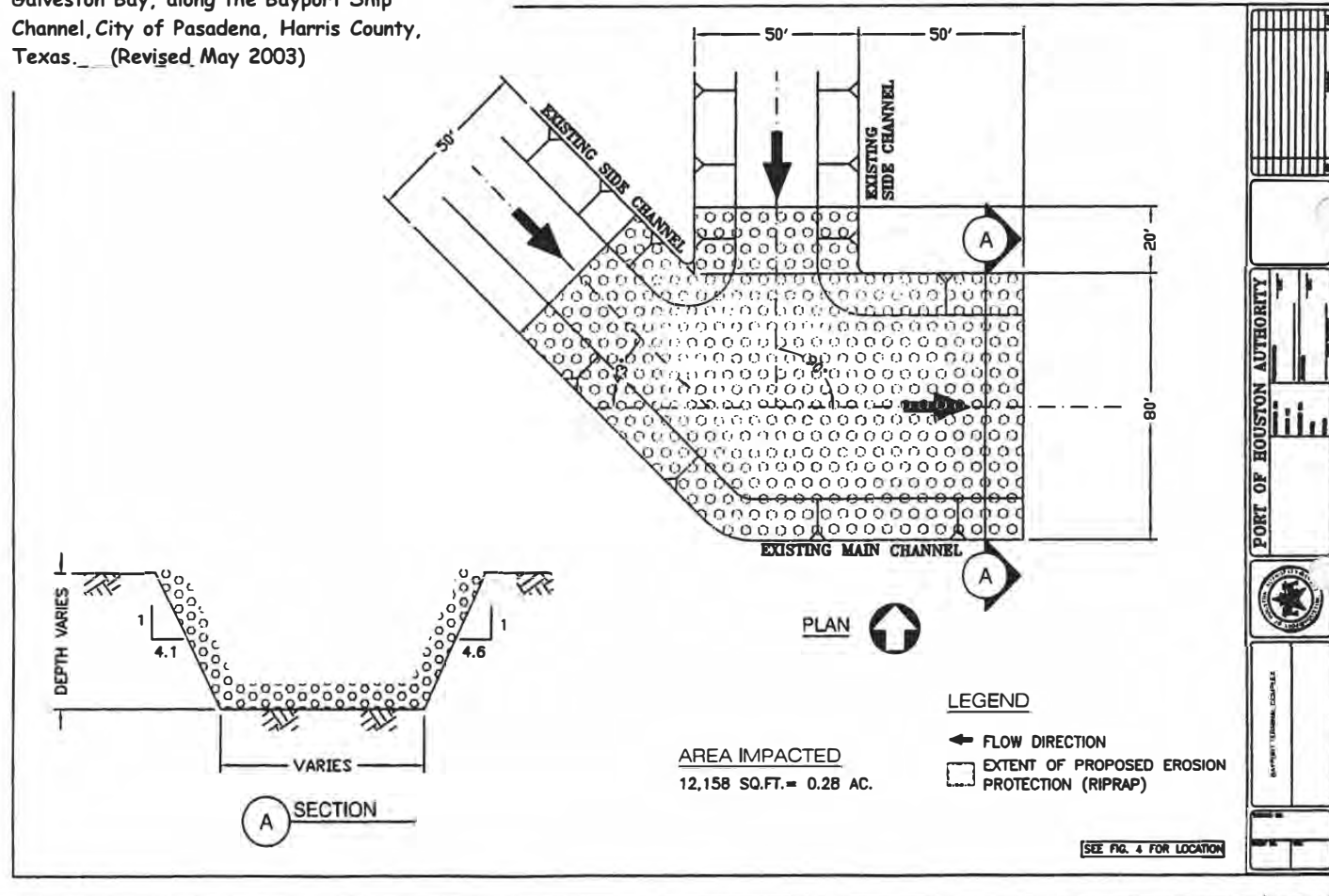
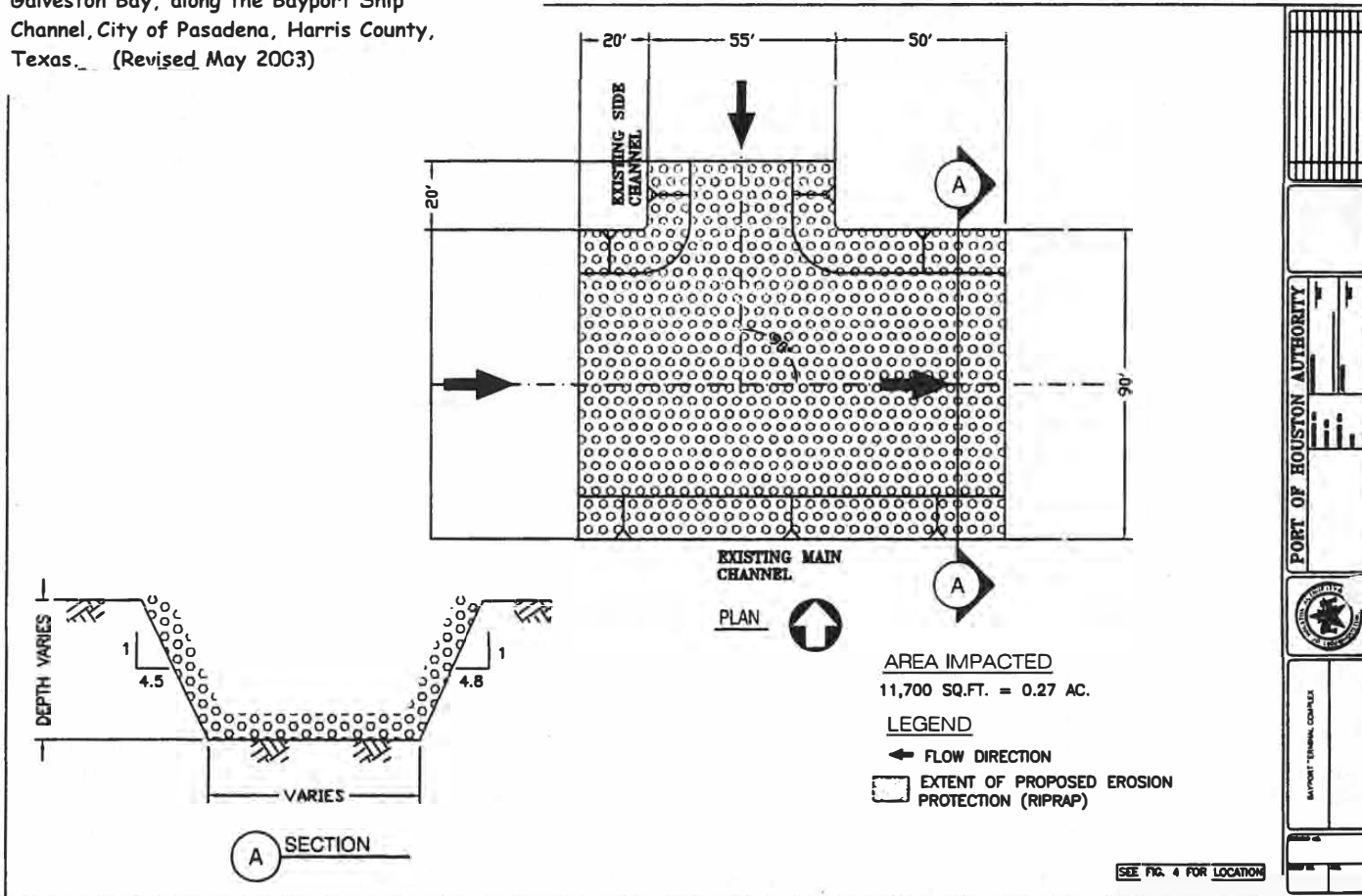


FIG. 26 - PROPOSED PINE GULLY EROSION PROTECTION

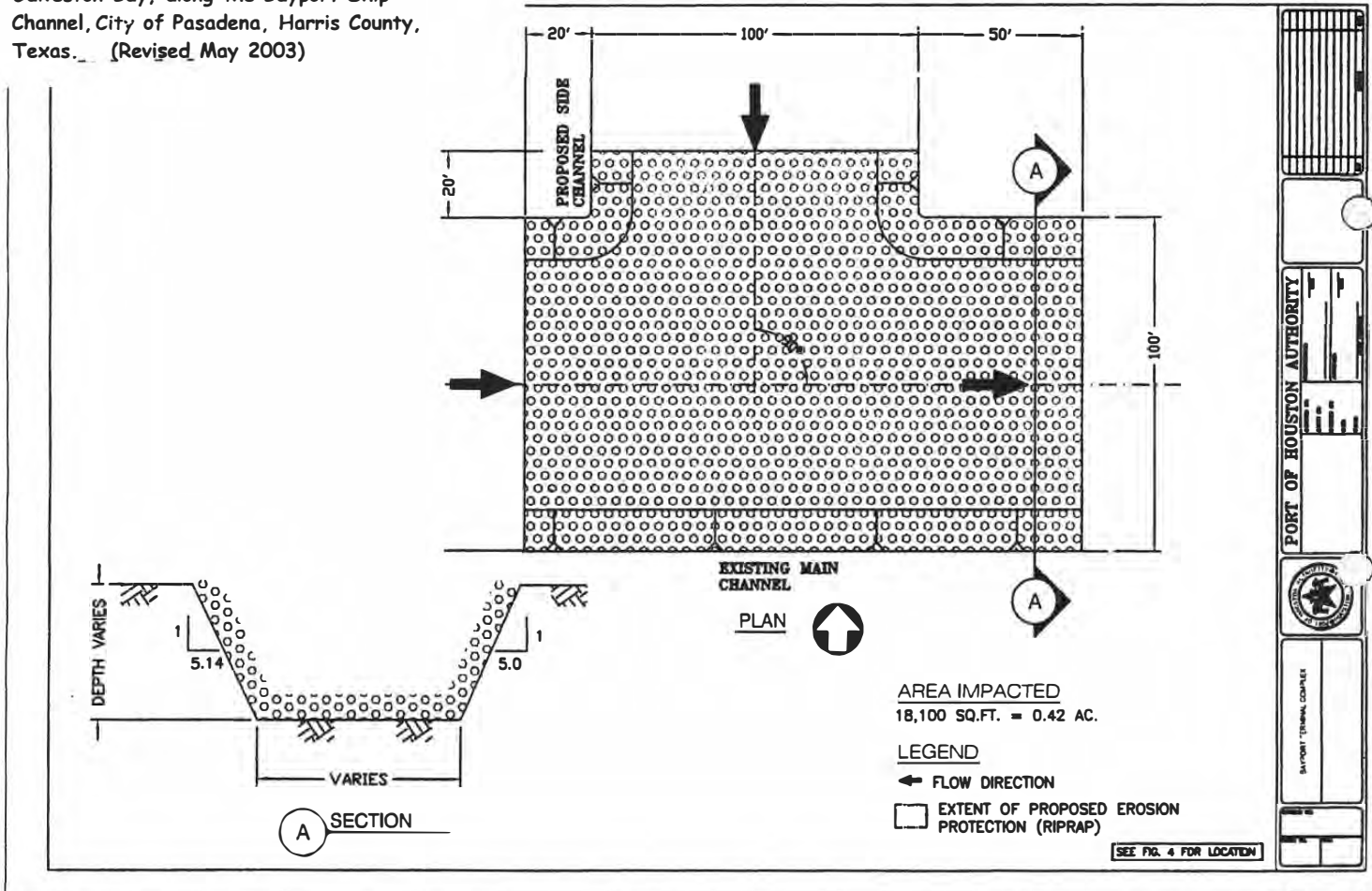
Port of Houston Authority No. 21520(Revised)  
Galveston Bay, along the Bayport Ship  
Channel, City of Pasadena, Harris County,  
Texas. (Revised May 2003)



~~PERMITTED PLANS~~

FIG. 27 - PROPOSED PINE GULLY EROSION PROTECTION

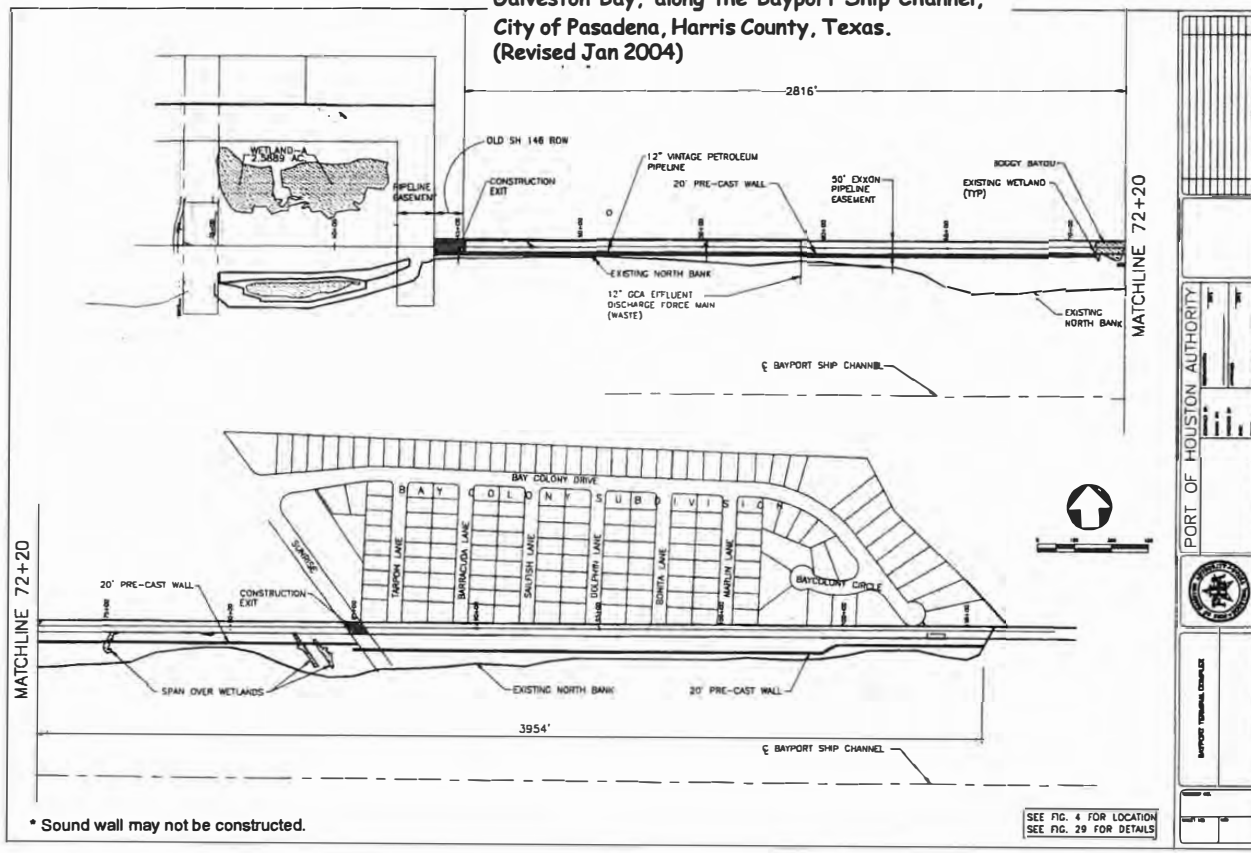
Port of Houston Authority No. 21520(Revised)  
Galveston Bay, along the Bayport Ship  
Channel, City of Pasadena, Harris County,  
Texas. (Revised May 2003)



**PERMITTED PLANS**

**FIG. 28 - BAYPORT NORTH SHORE 20' SOUND ABATEMENT WALL - PLAN VIEW**

Port of Houston Authority No. 21520(Revised)  
Galveston Bay, along the Bayport Ship Channel,  
City of Pasadena, Harris County, Texas.  
(Revised Jan 2004)



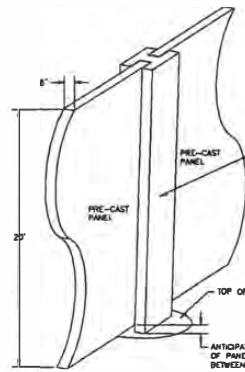
\* Sound wall may not be constructed.

SEE FIG. 4 FOR LOCATION  
SEE FIG. 29 FOR DETAILS

**PERMITTED PLANS**

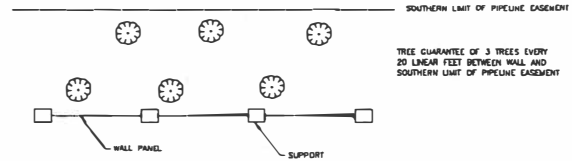
**FIG. 29 - BAYPORT NORTH SHORE SOUND ABATEMENT WALL-DETAILS\***

Port of Houston Authority No. 21520(Revised)  
Galveston Bay, along the Bayport Ship Channel,  
City of Pasadena, Harris County, Texas.  
(Revised Jan 2004)

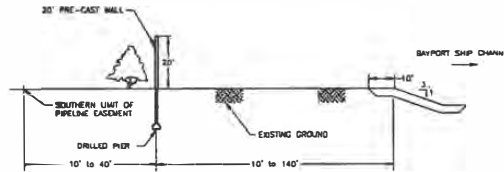


A PRE-CAST CONCRETE OR GALVANIZED STEEL, WIDE FLANGE SUPPORT, SUPPORTS TYPICALLY SPACED 30 FEET APART. SUPPORTS WILL BE PLACED TO AVOID WETLANDS BUT ALLOW PANEL TO SPAN WETLAND AREAS.

TOP OF DRILLED CONCRETE PIER  
ANTICIPATE GAP BETWEEN GROUND AND BOTTOM OF PANEL TO PROVIDE DRAINAGE TO VARY BETWEEN 6" AND 12"



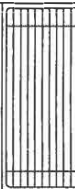

20' PRE-CAST WALL



CROSS SECTION

\* Sound wall may not be constructed.

SEE FIG. 4 & 28 FOR LOCATION


PORT OF HOUSTON AUTHORITY BAYPORT TRAINING COMPLEX

CITY OF PASADENA HARRIS COUNTY, TEXAS

